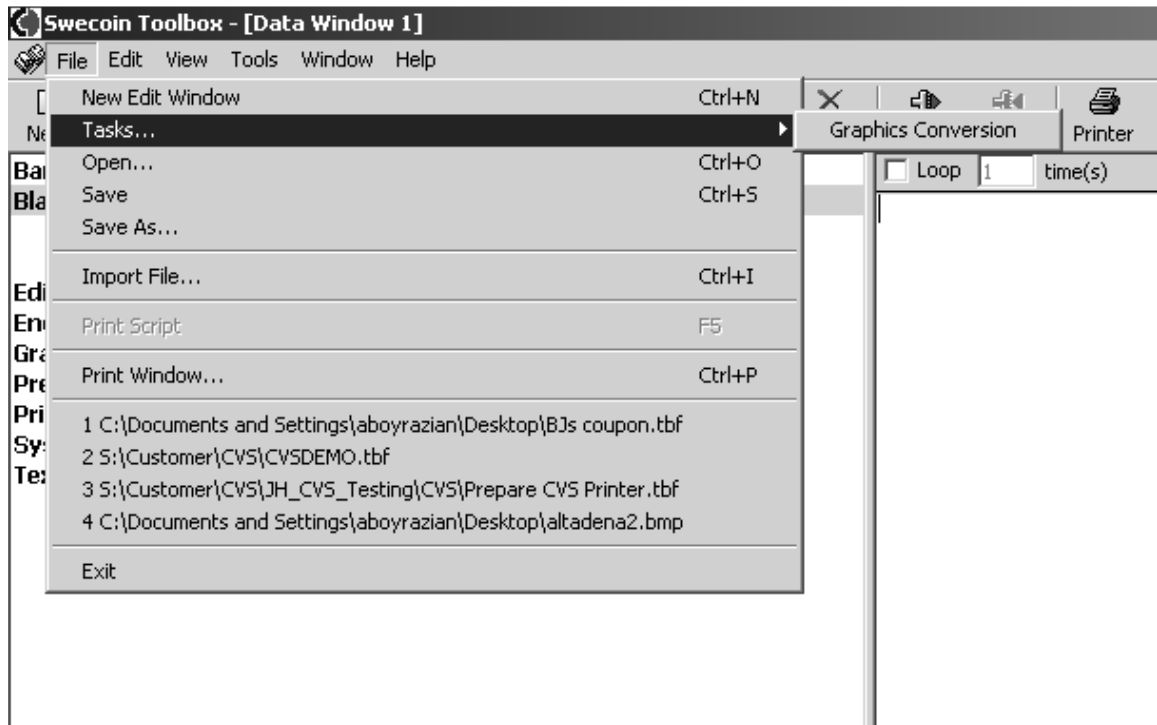


How to convert a bitmap to a logo using the Toolbox

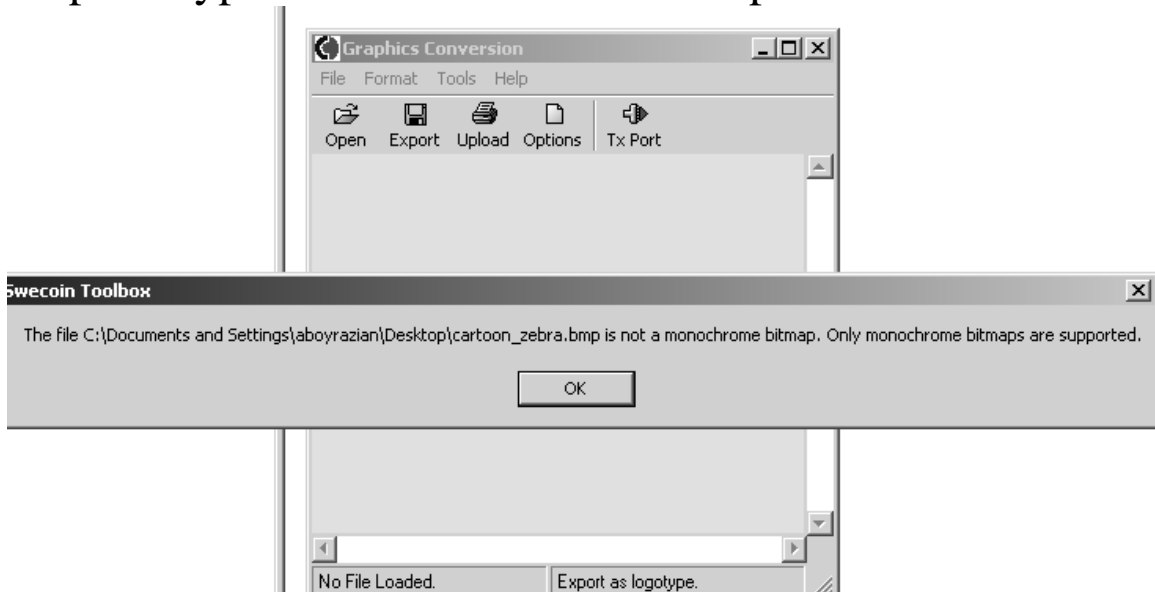
1. Open Toolbox, click File > Tasks > Graphics Conversion



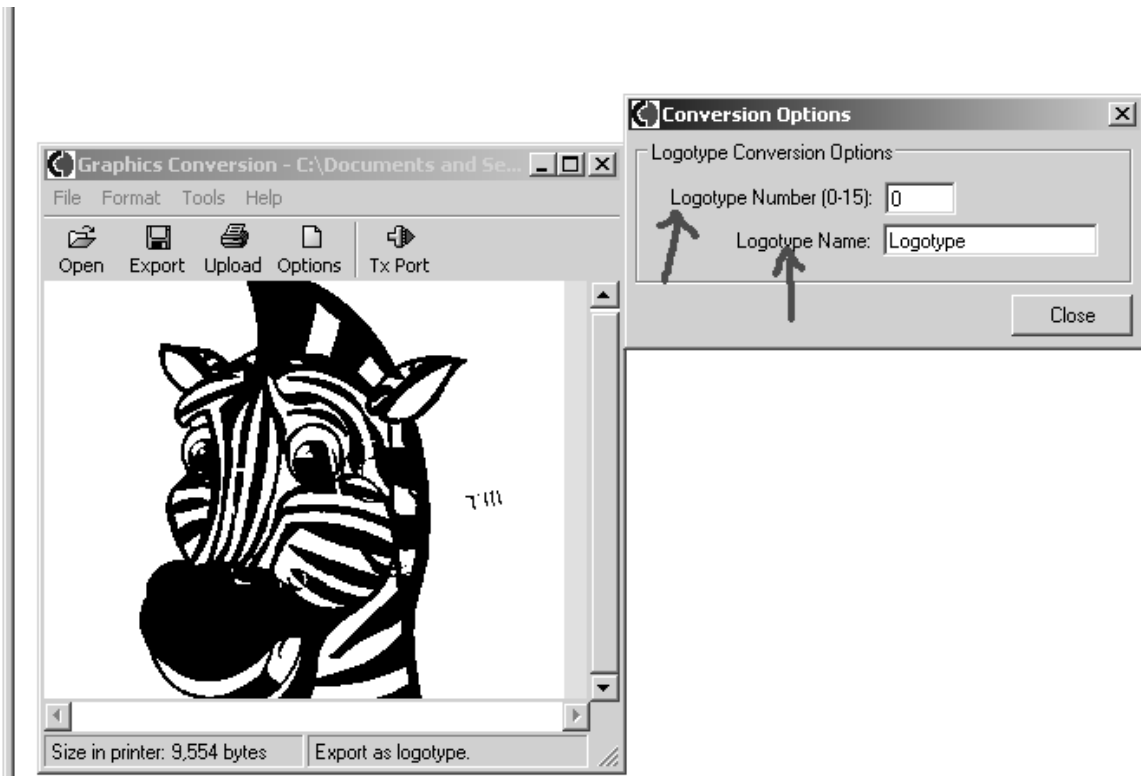
2. Click open and then select the bitmap file you plan to use. (NOTE: Make sure the bitmap file you chose is a monochrome bitmap)



If it is not a monochrome bitmap file, you will see the following message. You can use MS paint to save the bmp file type as a Monochrome Bitmap File.



3. Once you have opened the bmp file, click on the Export button and then specify the logotype number and name.



4. Click the close button, specify the filename and then click the Save button.

